



**Wide Format Products And Services**  
***A Full Range For Retail, Corporate, Event***

With a full range of wide format products for indoors and out, stationary and mobile, retail, corporate, and event, we can provide the best solution for your requirements. Included in our extensive product line are:



- 





# Banners

From civic events to promotions, our banners make certain that your message reaches thousands of people each day. These one-or two-sided banners are water, wind and weather resistant.

***As always our products and services include a 100% Satisfaction Guarantee.***



**Building Banners**

## **Building Banners ▲**

- ▶ ***Turn an enormous facade into a platform for promoting product, project, or event***
- ▶ ***Attract rapidly-moving people at a distance***
- ▶ ***Mount at any height on a full range of building surfaces***
- ▶ ***Install anywhere throughout the nation***

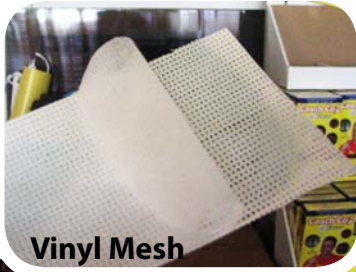


**Pole/Boulevard Banners**

## **Pole/Boulevard Banners ▲**

- ▶ ***Line any street, mall, or parking lot with series of promotional or decorative banners***
- ▶ ***Spring-loaded and articulated piston brackets spill wind, preventing tearing***
- ▶ ***Will fit round, square, or multi-sided poles***





**Vinyl Mesh**



**Fabric Mesh**

## Outdoor Banners

- ▶ *Great for outdoor marketing along streets, in front of businesses*
- ▶ *Materials stand up to severe weather conditions*
- ▶ *Inks are fade resistant*

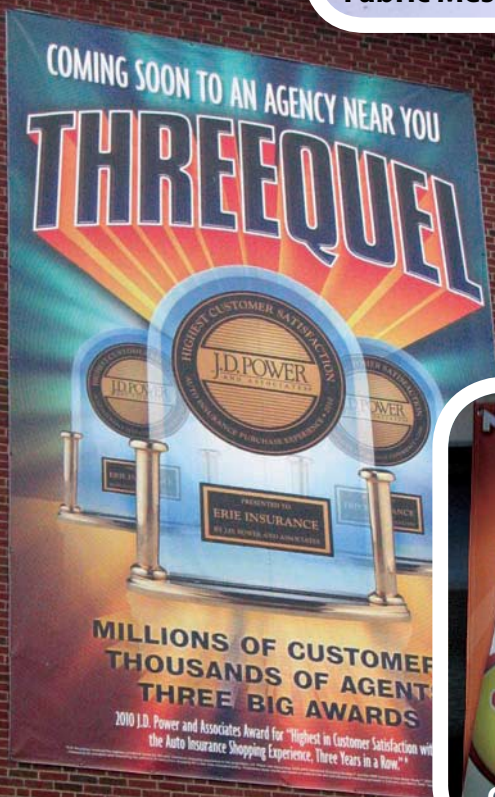
## Indoor Banners

- ▶ *Use in any business environment for high-impact messaging*
- ▶ *Flexible and highly portable*
- ▶ *Reinforcements*

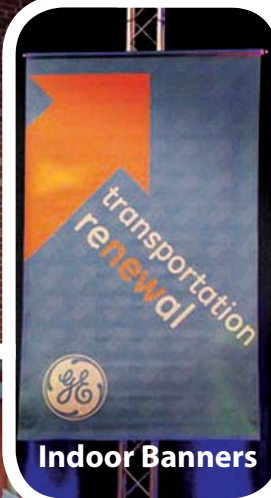
*can be added to stress points*

## Custom Banners

- ▶ *Can be furnished with banner stands and hanging systems*
- ▶ *Variety of banner materials: vinyl, fabric, poly, vinyl mesh, fabric mesh*
- ▶ *Stitching, hemming, grommets, wind slits, roping, pole pockets*



**Mounted on Brick Facade**



**Indoor Banners**



**Custom Banners**

## Everything for that Perfect Banner Application

- ▶ *Indoor and outdoor banners*
- ▶ *Any size and shape*
- ▶ *One or two-sided models*
- ▶ *Full-color graphics*
- ▶ *Variety of banner materials – vinyl, fabric, poly*
- ▶ *Matte or gloss finishes*
- ▶ *Stitching, hemming, grommets, wind slits, roping, pole pockets*
- ▶ *Installation hardware*
- ▶ *Banner stands and hanging systems*
- ▶ *Online ordering*



## Pole Banner Displays

***Great for promotions and festivals, custom messages to visitors, seasonal messages, and directions.*** City officials, business managers, and event planners are reaping the benefits of this highly-effective promotional medium. Printed

in full color on durable, weather-resistant materials. Mounting hardware available.



- ▶ Full-color, double-sided
- ▶ Single or double-banner configuration
- ▶ Standard 3-inch pole pockets added on top and bottom for easy attachment to bracket system
- ▶ UV protected/weather resistant materials
- ▶ Variety of sizes and shapes
- ▶ Outdoor hardware
- ▶ Series of finishing options—stitching, cutting, grommets.



# ***Pole Banner Mounting Systems***

***Here's everything you need to set up boulevard banners in a breeze.***

Standard and premium bracket systems make certain your banners are safely secured, protected against damage, and furnish the aesthetic impact they were designed to.



## ***Standard Bracket System***

- ▶ ***Rust-free cast aluminum base***
- ▶ ***Unique base design will fit square, round, or multi-sided poles***
- ▶ ***One degree cant engineered into base, top and bottom, to keep banners taut***
- ▶ ***Fiberglass arms which flex in strong winds, transferring wind load off the banner***
- ▶ ***Stainless steel bands***



## ***Spring Arm Bracket System***

- ▶ ***Patented stainless steel spring arm design bends up to 60 degrees to deflect the strongest winds***
- ▶ ***Easy installation and change out: Just bend the rod, slip off the banner, and slip on the new one***
- ▶ ***Stainless steel and aluminum - no corrosion, no rust***
- ▶ ***Stainless steel sleeve protects rod from rubbing on the casting base***
- ▶ ***Spring arm makes changing graphics quick and easy***



## ***Wall Mount Bracket System***

- ▶ ***Effective for banners that give directions, mark buildings and offices, and promote products and services***
- ▶ ***Vertical configuration installs banners on walls and other flat surfaces***
- ▶ ***Cast aluminum bracket does not corrode or rust from being outdoors***
- ▶ ***Designed for use with other components of our pole bracket system***
- ▶ ***3" x 5" base***





# ISOframe WAVE Displays

**Create Alternate Layouts With Same Graphics And Framework.** A fully-flexible portable display system, the ISOframe WAVE can be configured to fit any size booth or display area.



- ▶ **Aluminum frame cladding system**
- ▶ **Flex entire display for shape needed**
- ▶ **Enlarge or reduce to suit the event**
- ▶ **Self-aligning 31.5" wide graphics**
- ▶ **Easy "no-tools assembly"**
- ▶ **Extremely compact during transit**
- ▶ **Starter and extension kits available**
- ▶ **Accessories include variety of built-in tables and brochure holder**
- ▶ **LCD holder available**
- ▶ **Padded wheeled frame bag**
- ▶ **Warranty: 10 years**



# ISOframe COMPACT Displays

**Flexible Modular System With Design And Stability.** This modular system allows you to choose from three module styles - the one that's perfect for your graphics and exhibit design. And, further enhance this striking exhibit with a full selection of accessories.

- ▶ **Aluminum frame graphics system**
- ▶ **Three style modules - graphic wing, flying oval, and oval**
- ▶ **Enlarge or reduce to suit events**
- ▶ **Self-aligning 31.5" wide graphics**
- ▶ **Easy "no tools assembly"**
- ▶ **Extremely compact during transit**
- ▶ **Starter and extension kits available**
- ▶ **Accessories include variety of built-in tables, shelves, brochure holders**
- ▶ **LCD holder available**
- ▶ **Padded wheeled frame bag**
- ▶ **Warranty: 10 years**







# Elegant Series

**The Next Evolution In Trade Show Style And Versatility.** Select this slim display with curved ends or flat ends with decorative corner trim for a very contemporary look.



## Accessories

- ▶ *Media screen holder and table*
- ▶ *iPad holder*
- ▶ *LED spotlight*
- ▶ *Carrying case(s) included*

- ▶ *Top-of-the-line elegance*
- ▶ *Slim 7.5" frame looks great and saves space*
- ▶ *Extremely strong and stable construction*
- ▶ *Enables suspension of heavy media screens and table attachments*
- ▶ *Self-locking and cross braced*
- ▶ *Graphics always hang perfectly*
- ▶ *Quick, easy set-up*
- ▶ *Lightweight and portable*
- ▶ *Lifetime warranty*

## Available Models

### Curved Models

- ▶ *Curved Model  
32" x 89" x 8"*
- ▶ *Curved Model  
67" x 89" x 16"*
- ▶ *Curved Model  
91" x 89" x 24"*
- ▶ *Curved Model  
113" x 89" x 33"*

### Straight Models

- ▶ *Straight Model  
71" x 89" x 8"*
- ▶ *Straight Model  
102" x 89" x 8"*



# SnapUp Backwall Displays

**Straight And Curved Styles Present Seamless Large Scale Images.** These elegant pop-up displays allow for the fast presentation of seamless large scale images. Text and graphics are totally uninterrupted and attract full attention. These top-of-the-line models feature cross-braced construction for maximum strength and rigidity.



- ▶ *Straight and curved shapes*
- ▶ *6' and 8-½' straight models*
- ▶ *6', 8', and 10' curved models*
- ▶ *Standard Kits include frame, mag bars, mounting hardware for graphic panels*
- ▶ *Show Kits also include halogen lighting and hard case*
- ▶ *Show Kits plus add Pedestal conversion kit, fabric panels and lighting case*
- ▶ *Compact, portable, and user-friendly*
- ▶ *Warranty: 10 years*



# Trade Show Desks/Reception Counters

**Stylish Additions To Your Trade Show Display.** Receive your guests in style with these professional-looking reception desks and counters.

- ▶ *Variety of counter top finishes*
- ▶ *Wrap-around graphics*
- ▶ *Inner shelving space*
- ▶ *Quick, easy set-up*
- ▶ *Include your promotional graphics*
- ▶ *Carrying Bag available*
- ▶ *Warranty: 5 years*



Stretch Reception Counter  
41.7" w x 15.7" d x 40" h.  
Weighs 23 lbs.



Mini Reception Counter  
27" w x 11-1/2" d x 41" h.  
Weighs 22 lbs.



Maxi Reception Desk  
49" w x 18" d x 35-1/2" h.  
Weighs 40 lbs.

FLEX-Frame Counter  
28" w x 16" d x 41" h.  
Weighs 25 lbs.

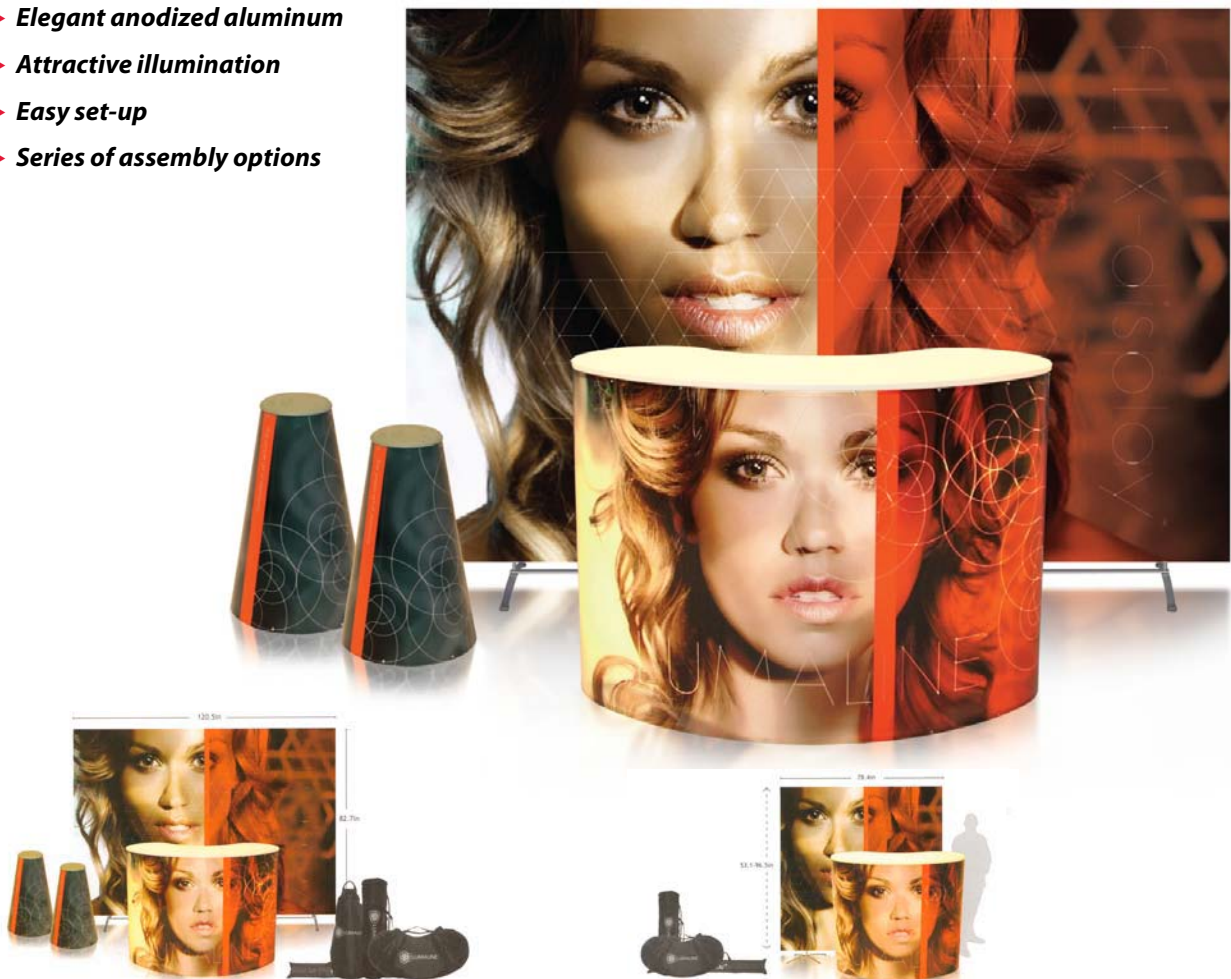




# FLEX-Display System

**Attractive Display Combines With LUMALINE Exhibition Furniture.** This bright new perspective on backlit displays/exhibition furniture is ideal for achieving impact and ambience on the exhibit floor.

- ▶ *Elegant anodized aluminum*
- ▶ *Attractive illumination*
- ▶ *Easy set-up*
- ▶ *Series of assembly options*



**Large Show Kit includes FLEX-Display back wall, 118.1" wide, large LUMALINE counter, and two LUMALINE chairs. Weighs 82.7 lbs.**

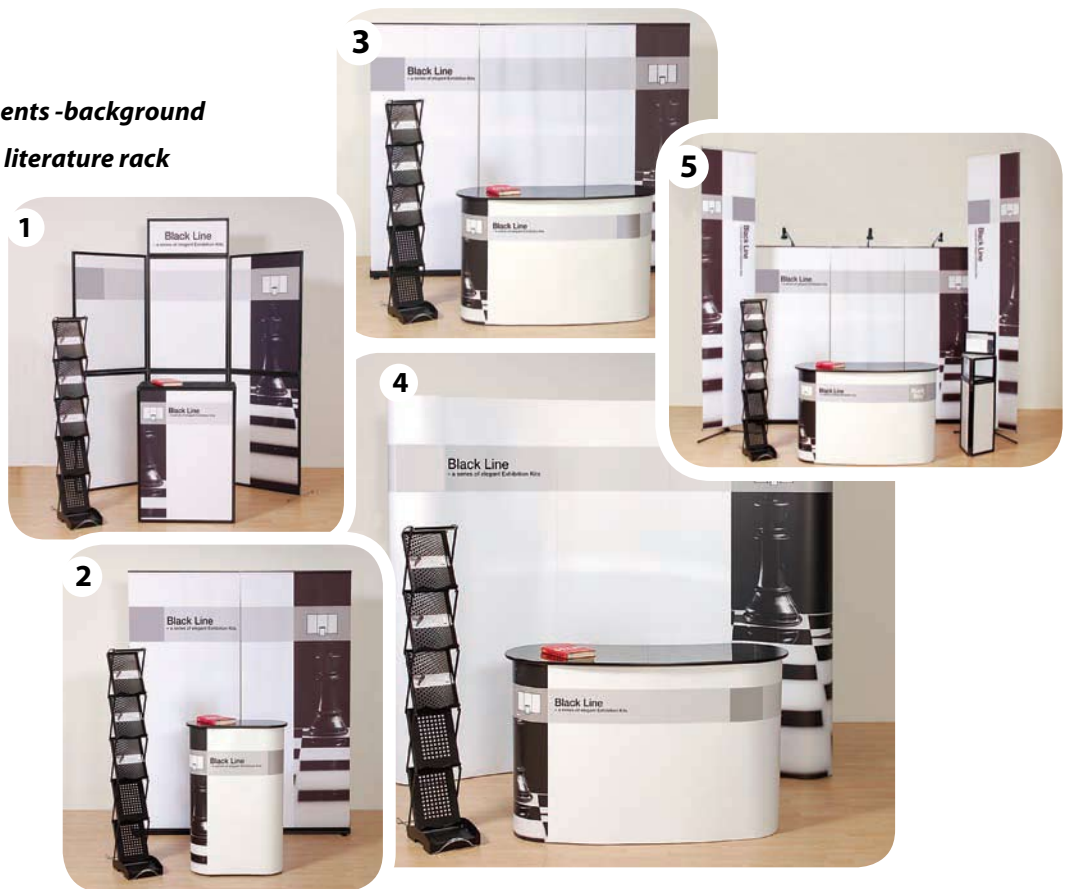
**Small Show Kit includes FLEX-Display back wall and small LUMALINE counter. Weighs 48.5 lbs.**



# Black Line Exhibition Kits

**Everything You Need For A Successful Mini Exhibition.** Each of the highly-functional kits combines luxurious black accents, the highest quality components, finest exhibit technology and full-color graphics.

- ▶ **Swiss quality**
- ▶ **Neatly packaged**
- ▶ **Black Line Kits components -background graphics, counter unit, literature rack**
- ▶ **Padded transport bag**
- ▶ **Warranty: 10 years**



1. Kit 7024. Back wall with header, demo counter, literature rack.
2. Kit 7025. Two 3' wide roll-ups, mini counter, literature rack.
3. Kit 7029. Three 3' wide roll-ups, midi desk, literature rack.
4. Kit 7030. MPS show kit, 3 x 3, midi desk, literature rack.
5. Kit 7031. Three 3' wide roll-ups, three halogen lights, midi desk, literature racks, business card collector, two banner stands.



# LUMALINE Exhibition Furniture

**Combine this family of illuminated exhibition furniture to suit your display needs and products.** Ambient lighting adds to any setting. Beautifully adapts to your surroundings.



- ▶ *Large and small counters as well as meeting desk*
- ▶ *Large, spacious counter for product demonstrations*
- ▶ *Front of clear polycarbonate, ready for graphics*
- ▶ *Shelves underneath counter*
- ▶ *Portable, easy-to-set-up meeting table*





# Swing-Up Literature Racks

**Just Unpack, Pull Upwards And Swing Up Is Ready.** Holds all kinds of printed material, including heavy catalogs, brochures and simple leaflets.



*SwingUp Literature Rack available in matte black or silver grey*



*Carrying case with or without wheels*



*Header board for additional branding*



# Hanging Banner Displays

**Triangle, Round, And Square Configurations Turn Heads From Any Location.**

These banner displays draw instant attention to your exhibit, reinforcing your logo and brand identity, while making it easier for attendees to find your booth.



- ▶ **Quick, easy assembly**
- ▶ **Frame accommodates variety of banner heights and widths with vinyl or fabric**
- ▶ **Collapses for easy storage and transport**
- ▶ **Square banner frame dimensions: 4', 6', 8', 10', 12', 15', 20'**
- ▶ **Triangle banner frame dimensions: 4', 6', 8' 10', 12', 15', 20'**
- ▶ **Round banner frame dimensions: (dia.) 6.58", 8.22", 9.87", 11.51", 14.80", 16.45"**



# Stretch Back Wall Display

**Easy-To-Use, Economical System For Short-Term Events And Exhibitions.**

Offers the quickest, easiest way to set up and display a seamless large-format graphic.

- ▶ ***Fours sizes available:***  
59" x 59"  
59" x 87-½"  
87-½" x 87-½"  
116" x 87-½"
- ▶ ***Fast and easy set up***
- ▶ ***Graphics remain on system***
- ▶ ***LED spotlights***
- ▶ ***Hard case or padded carrying bag available***







# Tower Display

**Circular Shape Gets Your Message Visible From All Angles In Small Amount Of Space.** Works according to the pop-up principle, making assembly quick and easy.

- ▶ **7' tower measures 26" wide x 88" high**
- ▶ **10' tower measures 26" wide x 116" high**
- ▶ **360 degrees of display area**
- ▶ **Totally secure and stable with easy-locking frame**
- ▶ **Collapsible and can be unfolded in minutes**





# Briefcase Display

**An Entirely Self-Contained System, The Briefcase Display Is Ideal For Portable Marketing Display Or Business Presentations.** Compact and durable, this all-in-one portable is veratile and especially easy to set-up, morphing from a briefcase to a tabletop display in seconds.

- ▶ **Image area: 48" wide x 24" high**
- ▶ **Four panels that attached with Velcro and header**
- ▶ **After presentation, display folds back into a briefcase with attached graphics sill in place**



# MegaMax Display

**MegaMax Is Not Only The Ultimate Self-Contained Tabletop Display, It's Also A Snap to Set Up.** Simply open the case and snap on header and lights. Done! Graphics remain inside for transport, ready to show when you again open the case.

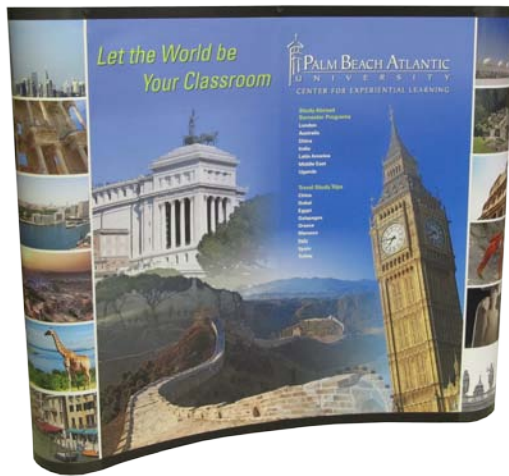


- ▶ **Image area: 74" wide x 36" high**
- ▶ **Four graphic panels and arched header**
- ▶ **Display panels are blow molded double wall reinforced polyethylene**
- ▶ **Graphics attach with Velcro and remain in place for transport**
- ▶ **Two 50-watt halogen lights with 7' cord**
- ▶ **Lockable latches keep presentation safe and sound**
- ▶ **Inline skate wheels and molded-in pull bar on case**



# SnapUp Curved Tabletop Display

**Perfect For Display Of Full Mural Graphics.** Designed in an attractive curved shape, the SnapUp Tabletop Display allows for the presentation of seamless large scale images.



- ▶ **70" wide for 6' tables**
- ▶ **92" wide for 8' tables**
- ▶ **Lightweight aluminum frame construction**
- ▶ **Quick set-up and take down**
- ▶ **Compact, portable and user friendly**
- ▶ **Exceptionally strong magnets**
- ▶ **Full 10-year warranty**

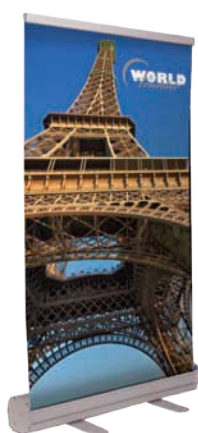




# Tabletop Retractable Displays

**Eye-Catching Retractable Banner Displays Offer Exceptional Functionality And Style.** Perfect for tabletop advertising at tradeshow, point-of-purchase areas, and lobbies.

## Tabletop Retractable Display



- ▶ **Image area: 24" wide x 23.5" - 35.5" high**
- ▶ **Banner attaches with snap rails on top and bottom**
- ▶ **No tools required for set-up**
- ▶ **Pop-out release button gives complete control over banner tension**
- ▶ **Replacement graphics can be easily added**
- ▶ **Optional light kit**
- ▶ **Free carrying case**

## BannerUp Mini Retractable Display

- ▶ **Image area: 16" wide x 18" high**
- ▶ **Aluminum construction**
- ▶ **Heavy duty base**
- ▶ **Roller mechanism built to last**
- ▶ **Easy "Quick Change Kits" for graphics**
- ▶ **Accepts all types of graphics**
- ▶ **Free carrying case**



# Mega Tabletop Display

**Stylish, Basic Design Allows Plenty Of Space For Effective Presentations.**

Features three hinged frames and one detachable header. Add fabric panels, marker boards or poster pockets.

- ▶ **Three large, hinged frames**
- ▶ **Accommodates three graphic panels**
- ▶ **One detachable header**
- ▶ **Lightweight and portable**
- ▶ **Folds completely**
- ▶ **Cardboard carry case with handle**
- ▶ **Two available sizes**





# Tension Fabric Displays

**The Next Evolution In Backwall Tradeshow Displays.** Tension fabric displays are lightweight and portable with top quality stretch fabric zipper closure graphics, available in various shapes and sizes.

- ▶ **Quick, easy set-up**
- ▶ **Lightweight and portable**
- ▶ **Wrinkle free stretch pillow case graphic with zipper closure**
- ▶ **Indoor use**
- ▶ **Single or double sided**
- ▶ **Carry bag included**
- ▶ **1 year warranty**



## Available Models

- ▶ **Curved Models**
  - 8 ft / 90.5" x 90.5" x 20.07" / 24.25 lbs
  - 10 ft / 118.1" x 90.5" x 20.07" / 26.45 lbs
- ▶ **Straight Models**
  - 8 ft / 90.5" x 90.5" x 11.8" / 28.66 lbs
  - 10 ft / 118.1" x 90.5" x 11.8" / 30.86 lbs
- ▶ **S Shaped Models**
  - 10 ft / 118.1" x 90.5" x 20.07" / 28.66 lbs
  - 20 ft / 240.1" x 90.5" x 20.07" / 66.13 lbs
- ▶ **Concave Models**
  - 20 ft / 240.1" x 90.5" x 20.07" / 66.13 lbs



▲ 20 ft S Curve Display with two case to podium graphics and lights



▲ Carrying bag

## Optional Counters & Accessories

### Counters

#### ▼ Option A

25.5" x 35.4" x 13.7" / 17.6 lbs



#### ▼ Option B

23.6" x 35.4" x 15.7" / 26.45 lbs



#### ▼ Option C

25.5" x 35.4" x 15.7" / 28.66 lbs



### Accessories

- ▶ Halogen or LED lights
- ▶ Trolley case
- ▶ Hard case to podium



◀ LED light



▲ Halogen light

#### ▼ Trolley Case



#### ▼ Case to podium







# MegaReady Retractable Display

**Height adjustability to 88".** An upscale look with functionality and style all in one.

Features height adjustability and an easy-to use snap-rail, telescoping poles, mounting base and open style support feet.

- ▶ **Open style heavy duty support feet**
- ▶ **Snap-lock top rail**
- ▶ **Telescoping support pole for adjustable banner height**
- ▶ **Padded carrying bag**
- ▶ **1 year warranty**



**Type:** Single Sided **Warranty:** 1 Year\*

**Size:** 36" (Image Area: 33.5" x 35"-88") 6.4 lbs

\*Expressed warranties apply to hardware only.



## ***MegaBudget Retractable Display***

***A user-friendly feature together in one value-priced rollup.*** Delivering a perfect blend of weight and durability, an easy-to use snap-rail, poles and mounting base, these displays will quickly become your top choice for projects large and small--from retail, tradeshow or events.

- ▶ ***Snap-lock top rail***
- ▶ ***Two swivel out feet***
- ▶ ***3 piece bungee corded pole***
- ▶ ***Padded carrying bag***
- ▶ ***90 day warranty***



**Type:** Single Sided **Warranty:** 90 Day\*

**Size:** 36" (Image Area: 33.45" x 77.5") 4.4 lbs

\*Expressed warranties apply to hardware only.



# MegaExpo Plus Retractable Display

**A sleek new wide-base profile design.** MegaExpo Plus is perfectly stable without protruding feet, providing a clean, high-end appearance in a very affordable retractable banner stand. A perfect example of attractive design that will fit even the tightest budgets.

- ▶ **Snap-lock top rail**
- ▶ **Wide, stable base**
- ▶ **3 piece bungee corded pole**
- ▶ **Padded carrying bag**



**Type:** Single Sided **Warranty:** 1 Year\*

**Size:** 36" (Image Area: 33.45" x 78.3") 9.7 lbs

\*Expressed warranties apply to hardware only.





# MegaExpo Retractable Display

**An extremely cost effective and reliable roll-up banner stand with the classic roll-up design.** Equipped with the basic and well tested functions of a retractable banner stand, but with a more simple and low weight construction compared to high-end products. Ideal for sales campaigns and events, for which you need a large number of promotional stands for a limited time period.

- ▶ **Protective endcaps in durable plastic**
- ▶ **Two swivel out feet**
- ▶ **3 piece bungee corded pole**
- ▶ **Snap-lock top rail**
- ▶ **Padded carrying bag**



**Type:** Single Sided **Warranty:** 1 Year\*

**Size:** 36" (Image Area: 33.45" x 79.5") 6.2 lbs

\*Expressed warranties apply to hardware only.



# ***Imagine® Retractable Banner Display With Interchangeable Graphic Cassette***

***Update your message on the go.*** High-quality single-sided display accents any application with style and finesse. Switch-out cartridge allows quick exchange of one graphic for another. Sets up for display in seconds.

- ▶ ***Drop-in graphic cartridge for quick exchange***
- ▶ ***Twist-and-lock telescopic pole for quick assembly and custom height settings***
- ▶ ***Built-in ratchet tensioner for easy tension adjustment***
- ▶ ***Anti-slip strips along base***
- ▶ ***Custom branding with slide-in graphic laminate along base***
- ▶ ***Silver with charcoal gray end caps***
- ▶ ***Foam padded carry bag***



**Type:** Single Sided **Warranty:** Lifetime\*

**Size:** 36" (Image Area: 31.5" x 29.5"-83.35")13.2 lbs

\*Expressed warranties apply to hardware only.



# Advance® Double-Sided Display With Interchangeable Cartridges

**Two graphics—twice as effective.** This double-sided display utilizes two graphics for drawing maximum attention to an exhibit. Fully interchangeable cassette cartridges for quick, simple graphic change out. Telescopic operation allows heights to any selection from 30" up to a full 84"

- ▶ **Drop-in graphic cartridges for quick exchange**
- ▶ **Twist & lock telescopic pole for quick assembly and custom height settings**
- ▶ **Built-in ratchet tensioner for easy tension adjustment**
- ▶ **Anti-slip strips along base**
- ▶ **Custom branding with slide-in graphic laminate along base**
- ▶ **Silver with charcoal gray end caps**
- ▶ **Foam padded carry bag**



**Type:** Double Sided **Warranty:** Lifetime\*

**Size:** 36" (Image Area: 31.50"x 29.5-83.35") 13.2 lbs

\*Expressed warranties apply to hardware only.





# BannerUp Displays

**Premium quality available in six widths.**

Premier, top-quality banner display.  
Visible front rim of cassette is only 1.6"  
high, focusing full attention on the  
banner. Comes in two colors and  
a selection of sizes.

- ▶ **High finish aluminum construction**
- ▶ **Hideaway swivel feet for increased stability**
- ▶ **1.6" high visible front rim of cassette**
- ▶ **Quick change system for graphics**
- ▶ **Heavy duty base with excellent stability**
- ▶ **Extremely rugged roller mechanism**
- ▶ **Accepts all types of graphic panels**
- ▶ **Can be connected side-by-side for larger display exposures**
- ▶ **Carrying bag included**
- ▶ **Optional hard cases**



**Type:** Single or Double\* **Warranty:** 10 years\*\*

**Sizes:** 24" (Image Area: 23.62" x 83") 9.9 lbs  
 36" (Image Area: 34.65" x 83") 13.2-30.9 lbs  
 40" (Image Area: 39.37" x 83") 14.3 lbs  
 48" (Image Area: 47.24" x 83"-118") 17.6-20.9 lbs  
 60" (Image Area: 59.05" x 83"-118") 22-23.1 lbs

\*Doubled Sided Display only available in 36" width

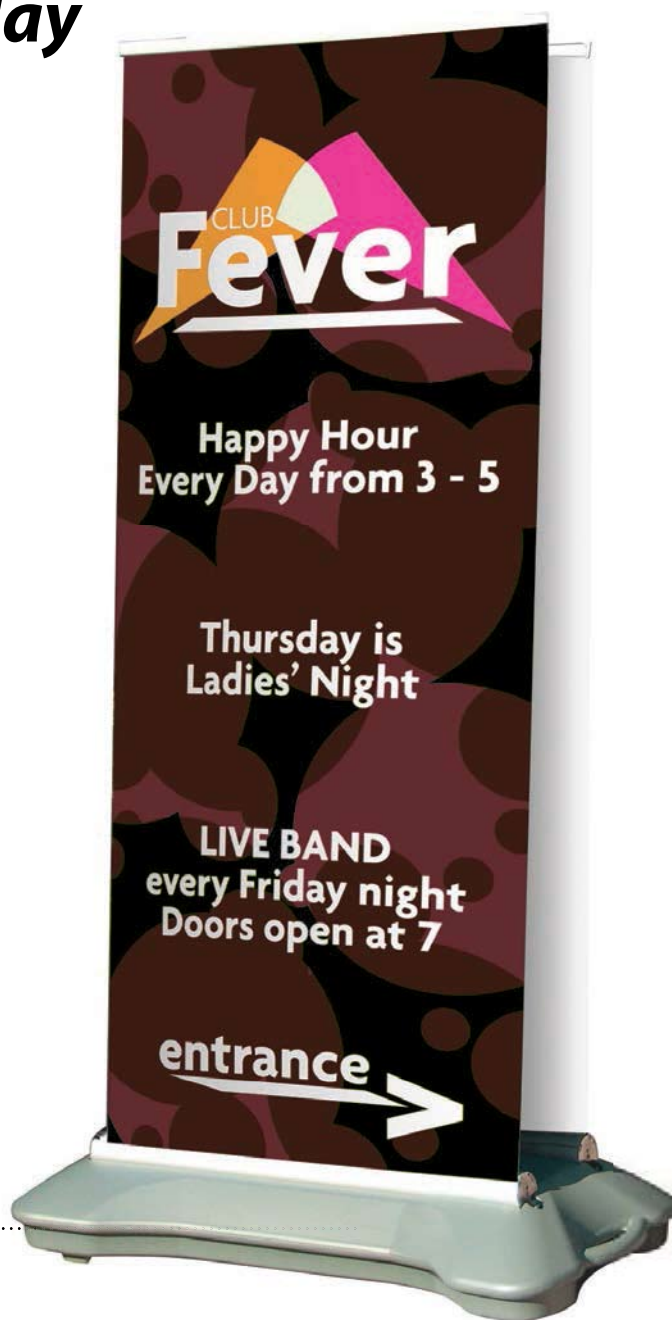
\*\*Expressed warranties apply to hardware only.



## ***Duo Deluxe Outdoor Retractor Banner Display***

***Portability & graphic storage for outdoor service.*** This portable outdoor display can accommodate either one or two banners. The graphics are housed within the base and pulled out when needed. Also features adjustable heights and easy-to-move rolling base.

- ▶ ***Banners attach with snap rails on top and banner tape on bottom***
- ▶ ***3 adjustable heights with touch of a button***
- ▶ ***Fill base with water for ballast***
- ▶ ***Easy-to-move rolling base***
- ▶ ***Free carrying case***
- ▶ ***Optional lighting***



**Type:** Outdoor Double Sided **Warranty:** Material Manufacturer

**Size:** 36" (Image Area: 31.50"x 62.75"-78.5") 45 lbs



# Outdoor Retractable Banner Display

***This heavy-duty outdoor advertising solution features detachable feet.***

When locked into the base, these feet provide a strong and stable footprint. Can be used as a single or double-sided display. Durable and easy to set up.

- ▶ ***Brushed aluminum base***
- ▶ ***Ground stakes anchor display securely into ground***
- ▶ ***Twist-lock telescoping pole for easy height adjustment***
- ▶ ***Free carrying case***



**Type:** Double Sided **Warranty:** 1 year\*

**Size:** 36" (Image Area: 33.25"x 77.25") 58 lbs

\*Expressed warranties apply to hardware only.





## X-Banner Stands

Lightweight and easy to use, display messages with high impact "X" displays. Full color banners attach to display with grommets in each corner and the flexible arm allows for greater stability.

- ▶ **Lightweight with strong fiberglass arms and plastic banner hooks**
- ▶ **Narrow footprint with upscale aluminum hub and leg combo**
- ▶ **Flexible arm allows for greater stability and taut banners**
- ▶ **Banner attaches with grommets in each corner**
- ▶ **Quick and easy set-up**
- ▶ **Lightweight and portable**
- ▶ **Carrying bag included**



**Available Sizes:** 23.5" wide x 70" high x 23" depth

Image Area: 23.5" x 70"

31.5" wide x 70" high x 20.5" depth

Image Area: 31.5" x 70"

31.5" wide x 79" high x 20.5" depth

Image Area: 31.5" x 79"

**Weight:** 2.75-3.5 lbs



## BannerUp Lite Displays

A full display of advantages, BannerUp Lite Displays are extremely lightweight, low-cost, user-friendly and versatile. A telescoping pole allows for variable heights and displays can be single or double sided. Connect multiple displays together to make a backwall using connector brackets.

- ▶ *Single or double sided displays*
- ▶ *Vinyl or fabric banners can be used*
- ▶ *Excellent stability*
- ▶ *Lightweight and portable*
- ▶ *Telescoping pole for variable height*
- ▶ *Connector brackets available*
- ▶ *Carrying bag included*



---

**Product Size:** 34.625" wide x 60-84" high x 13" depth (single sided)  
34.625" wide x 60-84" high x 15.35" depth (double sided)  
**Image Area:** 34.625" x 60"-84"      **Weight:** 4 lbs



# MegaTelescoping Banner Stands

Reliable, durable and easy to use, MegaTelescoping Banner Stands can be used as backdrop displays. Telescoping poles allows for custom banner sizes in both the width and height. Banners attach to hardware with top and bottom pole pockets and can be either single or double sided.

- ▶ **Telescoping poles for adjustable graphic width and height**
- ▶ **Single or double sided**
- ▶ **Easy to assemble, transport and store**
- ▶ **Steel feet for stability**
- ▶ **Black or silver models available**
- ▶ **Fabric or vinyl banners can be used**
- ▶ **Carrying bag included**



**Product Size:** 52.5-95" wide x 36.5"-96" high x 10" depth

**Image Area:** 52.5-95" x 36.5"-96"

**Weight:** 8 lbs





# MultiMaster

Adjustable from top to bottom. Bottom of display may be raised when graphics are obscured by a table. This allows MultiMaster to become a perfect backdrop to your display tables.

- ▶ **Various widths available**
- ▶ **Display graphics from 3' to 9.5' high**
- ▶ **Use as single or double sided display**
- ▶ **Multiple stands side-by-side hold extra-wide graphics**
- ▶ **Set-up takes seconds**
- ▶ **Nylon carrying case included**
- ▶ **Available in silver or black finishes**
- ▶ **Warranty: 10 years**



**Available Widths:** 18", 20", 22", 24", 36" 40" and 46"

**Image Area:** 18-46" x 36"-114"      **Weight:** 7.5 lbs



# Geometrix Fabric Banner Displays

Unique angles allows you to display multiple graphics and messages. Geometrix Fabric Display is available in floor or counter models in various sizes. The display is easy to assemble and fabric panels can remain on the display during storage and transport. Perfect for use at tradeshow, business lobbies, or for product demonstrations.

- ▶ **Lightweight, aluminum construction**
- ▶ **Locking mechanism stabilizes and ensures strength**
- ▶ **Fabric banner is machine washable**
- ▶ **Banners attach to display with pin slots in each corner**
- ▶ **Floor models or counter top**
- ▶ **Quick and easy set-up**
- ▶ **Lightweight and portable**
- ▶ **Carrying bag included**
- ▶ **1 year warranty**



## ▲ **Vertical 3-Panel Geometrix**

**Product Size:** 31.5" wide x 90.5" high x 11" depth  
**Image Area:** 26.75" x 31.18"      **Weight:** 7.25 lbs

## ◀ **9-Quad Square Geometrix**

**Product Size:** 90.5" wide x 90.5" high x 11" depth  
**Image Area:** various banner sizes; template available  
**Weight:** 13.5 lbs



## Curved Cantilever

Sleek and durable steel construction, this banner display holds single or double sided banners. Featuring a telescoping pole you can adjust the height from 54.625" up to 96". Banners affix to the display with grommets at top corners.

- ▶ ***Durable steel construction with powder coated finish***
- ▶ ***Easily accepts grommeted banners***
- ▶ ***Single or double sided banners can be used***
- ▶ ***Telescoping pole for adjustable height***
- ▶ ***Easy to assemble***



**Product Size:** 30.25" wide x 54.625"-96" high x 14" depth

**Image Area:** 24" x 46"-84"      **Weight:** 13.75 lbs





# Signage

The Right Signs And Graphics To Help You Increase Business Visibility.

- ▶ **Indoor/Outdoor**
- ▶ **Directional**
- ▶ **Yard Signs**
- ▶ **Site Signs**
- ▶ **Magnetic**
- ▶ **LED Edge Lit Frames**
- ▶ **Backlit**
- ▶ **Dry Erase**



Metal Frame Sign with inserts



Aluminum Panel Sign. Up to 5' x 12' or larger in sections



Backlit Snap Frame Sign



Signcades Signs. Can be water filled for added weight



Single/Double Post and Panel Signs



Aluminum Sign Cabinet with back lighting



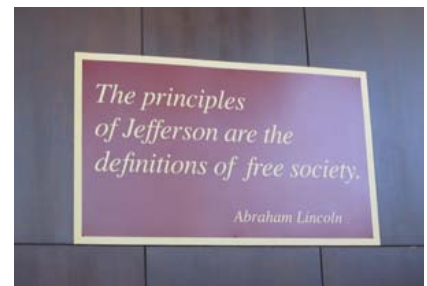
Side walk outdoor sign with water base/rollers



Yard Sign with Step Stake



Sintra Plastic Board, printed direct and contour cut







# Window, Wall & Floor Graphics

*Graphics That Make A Major Impact*

## Window Graphics

Window graphics are perfect for attracting attention, advertising products and promotions, highlighting special events and providing useful information. Our selection of window graphics can be placed on any flat surface, indoors and out. Window graphics are printed in full color, easy to apply and come in various materials for the perfect application.

### Perforated Window Mesh

- ▶ Shows full color images from outside and allows vision from inside
- ▶ Exterior or interior applications
- ▶ Size and shape to meet application requirements
- ▶ Easy to apply and remove



### Static Clings

- ▶ Can be printed one or two-sided
- ▶ Exterior or interior applications
- ▶ Size and shape to meet application requirements
- ▶ Easy to apply and remove



### Phototex Fabric

- ▶ Messages can be easily moved or changed, leaving no residue
- ▶ Exterior or interior applications
- ▶ No tools or training necessary
- ▶ Resists wrinkling, tearing and weathering
- ▶ Repositionable and reusable
- ▶ Can be used on windows, walls and floors







## Wall & Floor Graphics

Wall and Floor graphics are a unique way to place a strong promotional message. Wall graphics are an easy way to create custom wall murals. Floor graphics are extremely effective as indicator signs, safety warnings, and in events promotion. Having been successfully used on a wide range of applications, our substrates are perfect for many of your customers needs.

- ▶ *Application is quick and simple*
- ▶ *Available in any size or shape*
- ▶ *Long-term and short-term applications*
- ▶ *Indoor and outdoor capabilities*





# Adhesive Products

## Wide Range of Applications

The possibilities are endless with adhesive products, for everything from window, wall and floor graphics to photo print mounting, counter cards, standees and so much more. Offering an array of substrates, adhesive products are durable and can achieve the perfect solution for any need.

- ▶ **Applies to any surface**
- ▶ **Indoor or Outdoor applications**
- ▶ **Short or long term use**
- ▶ **Permanent or removable adhesive available**
- ▶ **Used with or without laminate**

**Outdoor Building Graphic**



**Magnet**



**Window Graphics**



**Vehicle Decals**



**Wall Graphic**



**Elevator Graphic**



**Decals**



**Standee**



**Floor Graphic**



**Counter Card**





# Standees

## Custom Shapes and Sizes

Standees offer a unique opportunity to add flair and drawing power to the promotion of your products, services, and business events. Standees and cutouts can be people, giant size objects, animals and cartoons. Attract people with custom large floor model standees or small counter top models that are trimmed to the general outline of the character.

- ▶ **Custom styles and sizes**
- ▶ **Self standing with sturdy easel back construction**
- ▶ **One character or entire campaign**
- ▶ **Trimming to general outline of character**
- ▶ **Floor or counter top models**
- ▶ **Quick and easy set-up**
- ▶ **Lightweight and portable**
- ▶ **Printed direct or mounted to rigid corrugated boards**
- ▶ **Large standees scored and folded for low cost shipping**







# Custom Posters

**Variety of finishes and thicknesses.** Finishing services such as mouting, laminating and framing is available. Quality, fade resistant inks and durable media options ensure vivid colors, excellent image quality, and long-lasting display capabilities.

- ▶ **No minimum quantities**
- ▶ **Any size**
- ▶ **Gloss, matte, satin finishes**
- ▶ **Various stocks and thicknesses**
- ▶ **Mounting, laminating and framing available**
- ▶ **Ship same day services**





# Outdoor Event Displays

**Fast Up, fast down, tents and feather banners are hassle-free.** Great for multiple venue setups like tradeshow booths, outdoor events, product demos and samplings. All outdoor displays are easy to set up and convenient.



## Pop Up Tent

- ▶ Heavy-duty anodized aluminum frame
- ▶ Easy to use and portable
- ▶ Telescoping legs for adjustable height
- ▶ Side/Back wall connectors available
- ▶ Carrying bag with wheels
- ▶ Outdoor use

## Feather Banners

- ▶ Easy to use and portable
- ▶ Different size and shapes
- ▶ Variety of bases
- ▶ Single/double sided
- ▶ Indoor/outdoor use
- ▶ Carrying case



## Outdoor Banner Boards

- ▶ Tension Fabric and Vinyl Models Available
- ▶ Indoor/outdoor use



◀ Ground PopUp Displays





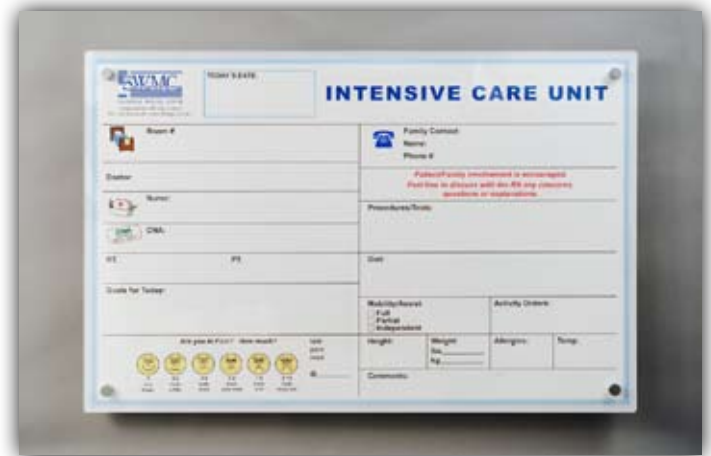


## Premium Quality Patient Care Boards

*Improves Efficiency In Patient Rooms, Nursing Stations And ICU/ER/OR/OB Areas*

What better way is there to increase patient satisfaction than to improve communications between patients, doctors, nurses and staff? Patient care boards provide a focal point where this information is displayed, enhancing efficiency and reducing anxiety for patients and their families.

These versatile care boards can also be furnished for nurses stations and ICU/ER/OR/OB areas, helping keep medical staffs informed.



Snap Frame with MegaClear dry erase surface on 13pt board for easily insertion into snap frames. Frames are made of anodized aluminum, miter cut to any custom size or color (minimum may apply).

Aluminum panel, printed form, acrylic front panel with MegaClear dry erase surface for no ghosting and polished aluminum standoffs for wall mounting.





## Durable, Versatile, Attractive

- ▶ **Standard styles, sizes, along with custom designs and applications to suit any requirement.**
- ▶ **Durable, premium construction--feature full-color graphics sandwiched between a high-quality aluminum panel and acrylic cover. This cover can be written on with dry erase and easily erased or cleaned.**
- ▶ **Long service life--built to stay like new over a lifetime of daily use.**
- ▶ **Fade resistant full-color graphics printed on polypropylene for added durability.**
- ▶ **MegaClear dry erase surface guarantees no ghosting from repeated use of erasable markers or cleaning.**
- ▶ **Graphics are easily interchangeable.**
- ▶ **Disinfectant safe--these care boards can be disinfected without affecting the surface--can be disassembled and put back together for cleaning with any solution.**



Care Boards Can Be Used In Vertical or Horizontal Positions



Low Cost Foam Board with MegaClear dry erase surface. Cut to any custom size and framed with perimeter trim. Applied to any surface with double sided tape.



Dry Erase Quick Stick Wall Graphic. Featuring MegaClear dry erase surface on 6 mil pressure sensitive film. Repositionable, easy to apply, and reusable. Peel off liner and apply to any surface.



# Custom Graphics/Applications/Services

**Superior, Customized Support.** No matter the project scope, timing or challenges.

- ▶ **Full-Color Graphics, Any Size, On Anything, Anywhere**
- ▶ **Design**
- ▶ **Various Finishing Processes**
- ▶ **Fulfillment**
- ▶ **Shipping**
- ▶ **Expert Technical Support**



▲ **Presentation Box; Pressure Sensitive Adhesive mounted to Coroplast**



▲ **3 Piece Standee/Display; Direct Print to Coroplast**



▲ **Custom Smart Phone Holder; Fabricated of Acrylic and Laminated Graphics with matching Presentation Box**



◀ Counter Card; Direct Print to Corrugated B-Flute with Literature Pocket affixed to front



▲ Truck Bed Signs; Direct Print on Coroplast



▲ Custom Fabricated Black Angle Iron Frame with APanel, double sided insert



◀ Hospital Information Display; Fabricated of Laminated Woods and Acrylic



▲ Double Sided Coroplast Arrow



▲ Point of Sale Ballot Boxes; Pressure Sensitive Adhesive mounted to Corrugated B-Flute